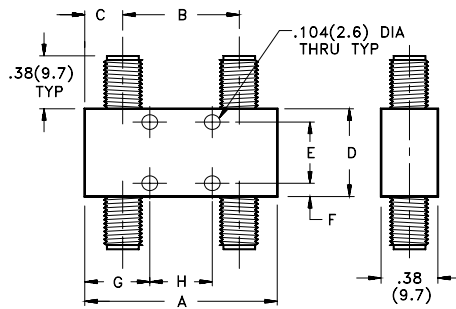


250 MHz - 18.0 GHz High Performance

- Low VSWR - High Isolation
- 90° Quadrature Phase
- Small Size, Light Weight
- Meets MIL-E-5400 and MIL-E-16400

Midwest Microwave's series of high performance 90° Non-Crossover Hybrid Couplers are identical to the crossover type except that the output ports are on opposite sides of the unit. The non-crossover feature, putting the outputs on opposite sides of the unit is convenient for some situations where it is convenient and precious space and weight can be conserved.



ELECTRICAL SPECIFICATIONS

FREQUENCY RANGE (GHz)	CASE STYLE	MODEL NUMBER	AMPLITUDE BALANCE (dB)	INSERTION LOSS (dB) max	ISOLATION (dB) min	VSWR max	POWER (In) Avg (W) Peak (kW)
OCTAVE BANDWIDTH TYPES							
.25-0.5	3	HYB-5309-03-SMA-79	0.5	0.20	25	1.20	50 3
.50-1.0	3	HYB-5310-03-SMA-79	0.5	0.20	25	1.20	50 3
1.0-2.0	2	HYB-5311-03-SMA-79	0.5	0.20	22	1.20	50 3
2.0-4.0	1	HYB-5312-03-SMA-79	0.5	0.25	22	1.25	50 3
2.6-5.2	1	HYB-5313-03-SMA-79	0.5	0.30	20	1.25	50 3
4.0-8.0	1	HYB-5314-03-SMA-79	0.5	0.30	20	1.35	50 3
7.0-12.4	1	HYB-5315-03-SMA-79	0.5	0.50	18	1.45	50 3
12.4-18.0	1	HYB-5317-03-SMA-79	0.5	0.60	15	1.45	50 3
MULTI-OCTAVE BANDWIDTH TYPES							
.50-2.0	7	HYB-5320-03-SMA-79	0.5	0.60	24	1.30	50 3
2.0-8.0	2	HYB-5322-03-SMA-79	0.5	0.75	17	1.30	50 3
6.0-18.0	1	HYB-5326-03-SMA-79	0.5	0.60	15	1.45	50 3

MECHANICAL SPECIFICATIONS - INCHES (mm)

CASE STYLE	A	B	C	D	E	F	G	H	WEIGHT	
									Oz	Gr
1	1.00 (25.4)	0.50 (12.7)	0.25 (6.3)	0.50 (12.7)	0.312 (7.9)	0.093 (2.4)	0.50 (12.7)	N/A	0.60	17
2	2.00 (50.8)	1.50 (38.1)	0.25 (6.3)	0.50 (12.7)	0.312 (7.9)	0.093 (2.4)	1.00 (25.4)	N/A	0.64	18
3	2.00 (50.8)	1.50 (38.1)	0.25 (6.3)	1.00 (25.4)	0.812 (22.1)	0.093 (2.4)	1.00 (25.4)	N/A	0.82	23
7	5.58 (141.7)	5.00 (127.0)	0.29 (7.4)	0.70 (17.8)	N/A	0.35 (8.9)	0.08 (2.0)	5.420(137.7)	2.35	67

Note: TNC or Type N output connectors are available by substituting "TNC" or "NNN" for "SMA" in the Model Number.